

Satellite Learning Sheet

Thursday, January 18th

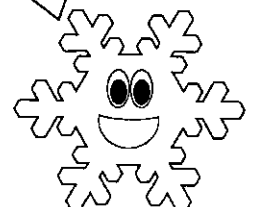
BIBLE/DEVOTION
1. <u>Practice the Bible Verse:</u> Practice all of Psalm 100 (use the motions we learned in class to help you). 2. <u>Chapel Questions:</u> What is praise? How do we praise God?
READING / WRITING
1. Analyzing a Paragraph: - Read each paragraph and answer the questions. 2. Write a Paragraph: Use a piece of paper from the writing section of your FROG Binder to write a <u>5 sentence</u> paragraph - Choose a topic to write about (you can write about anything you like). - Write a <u>topic sentence</u> , <u>3 detail sentences</u> that go along with your topic, and a <u>closing sentence</u> . - <u>Check your work</u> . Make sure you have capitals, periods, and commas wherever needed. Also check to make sure you don't have capital letters where they don't belong. 2. Book Report: - Focus on finishing your book and begin working on your book report.
LANGUAGE ARTS
1. Comma Practice: In SEESAW - Log in to Seesaw (log-in information is on the log-in page in your FROG binder) - Use the pointer tool to drag the commas to the correct places (you won't use all the commas)
SPELLING
Spelling: - Find your new spelling list in your homework folder (remember to keep this list for a full week) - Choose an activity on your January Spelling Activity Menu (in the <u>writing section</u> of your binder)
MATH
1. Fractions: - Color the fractions and answer the questions. 2. Multiplication Facts: - Log in to Education.com (log-in information can be found on your log-in sheet) - Find the multiplication facts assignment in your assignment folder (lower left corner of the screen) - Play two of the math-fact fluency games.
SCIENCE
Magnet Maze: - Use the provided paper plate to create a magnet maze. SEE THE BACK OF THE SLS FOR DETAILED INSTRUCTIONS

Don't forget to read and fill out your reading log!

Student's Name: _____

My child has completed all Satellite Learning assignments _____ (initials)

Parent Comments (questions/concerns):



Magnet Maze:

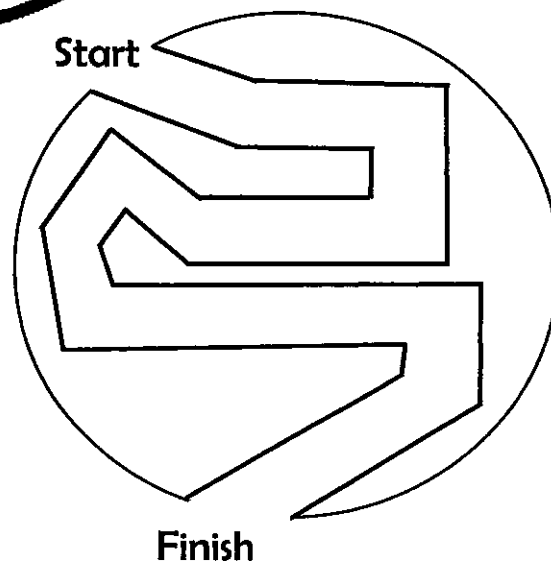
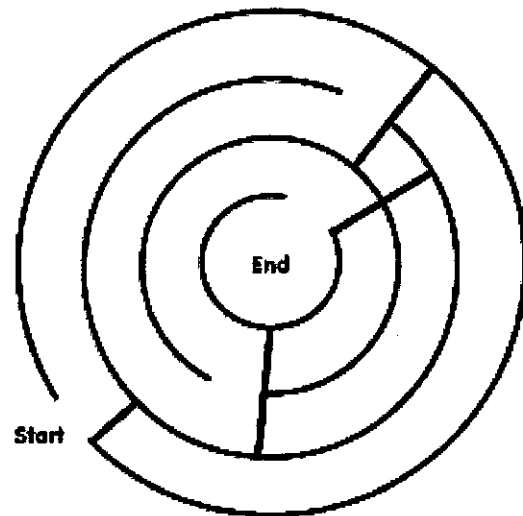
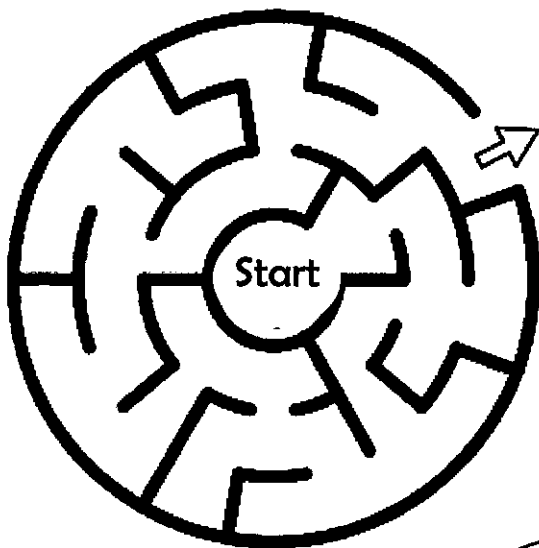
Use the provided paper plate to draw a magnet maze. *Students will use their mazes in class by placing a magnet on the top and bottom of their plates and then using the bottom magnet to guide the top magnet through the maze.*

When you are drawing your maze:

1. Make sure there is enough space for a small, round magnet to travel through it.
2. Include a place to start and finish the maze.
3. Make your maze nice and big so your magnet has a long way to travel.
4. If you want to add a challenge, draw some dead ends. *This is optional. If you would like to just draw a simple path for your magnet, that's great too!

If you are having a hard time figuring out your maze, start by drawing a circle along the outer edge of the plate. Then add "walls" for a magnet to travel around. You may also just make a long, winding path.

Examples:



Analyzing an Information Paragraph

AN INFORMATION PARAGRAPH

- is a group of sentences
- tells about one main idea
- has a topic sentence that tells the main idea
- has detail sentences that tell facts about the main idea

Read each paragraph. Draw a line under the sentence that tells the main idea. Then list two details.

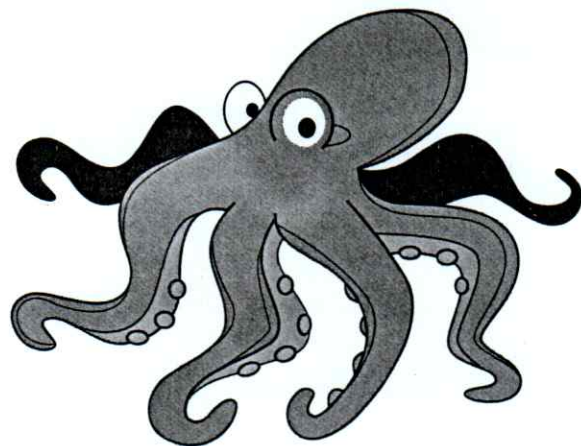
1. The squid and the octopus look very different. The octopus has a round head and body. It has eight arms, or tentacles, on the bottom of its body. The squid is torpedo-shaped. All of its tentacles are at one end. Eight of them are the same length. Two are longer, for a total of ten.

a. _____
b. _____

2. The squid and the octopus behave very differently. The squid can shoot through the water at great speed. The octopus moves more slowly and spends most of its time on the sea bottom.

a. _____

b. _____

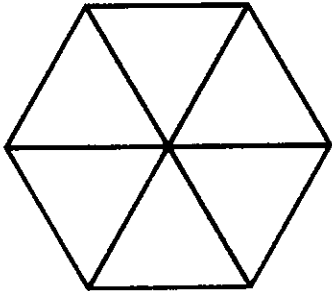


Name: _____

Date: _____

Fractions I

Directions: Color the fractions according to the directions.
Answer the questions.

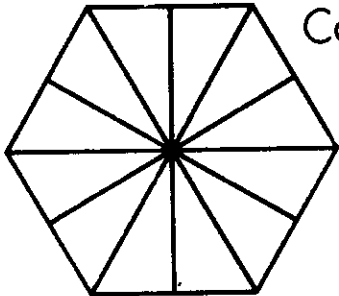


Color 2 parts red. Color 3 parts blue. Color 1 part green.

What fraction of the hexagon is red? _____

What fraction of the hexagon is blue? _____

What fraction of the hexagon is green? _____

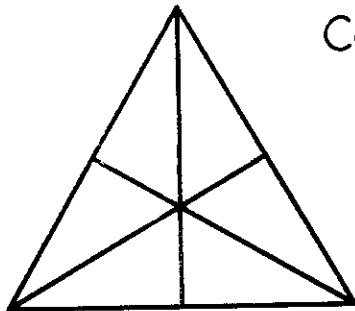


Color 4 parts yellow. Color 6 parts red. Color 2 parts orange.

What fraction of the hexagon is yellow? _____

What fraction of the hexagon is red? _____

What fraction of the hexagon is orange? _____

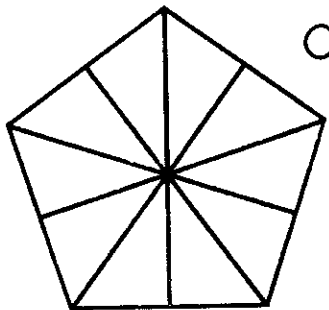


Color 3 parts brown. Color 2 parts green. Color 1 part red.

What fraction of the triangle is brown? _____

What fraction of the triangle is green? _____

What fraction of the triangle is red? _____

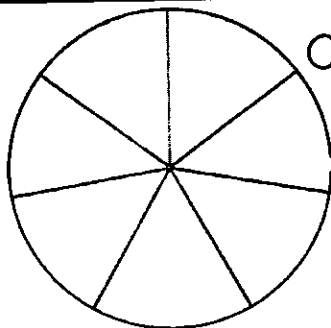


Color 3 parts blue. Color 4 parts green. Color 3 parts yellow.

What fraction of the pentagon is blue? _____

What fraction of the pentagon is green? _____

What fraction of the pentagon is yellow? _____



Color 3 parts orange. Color 2 parts blue. Color 2 parts red.

What fraction of the circle is orange? _____

What fraction of the circle is blue? _____

What fraction of the circle is red? _____

Spelling Words

Ambiguous Vowels - *aw, au*

Generalization: The vowel sound heard in *saw* can be spelled two ways: *aw* and *au*. While *aw* can come at the end of a word, *au* never does.

<u>aw</u>	<u>au</u>	<u>oddball</u>
paw	launch	laugh
straw	pause	
drawn	fault	
hawk	sauce	
thaw	jaunt	
yawn		

Challenge Word: autograph

Spelling Words

Triple Blends - thr / shr / squ / spl

Generalization: Words with triple blends require careful listening to hear all the tightly meshed sounds.

thr -

throne

thrill

threat

shr -

shrimp

shrink

squ -

squash

squeak

squint

spl -

splash

splinter

Challenge Word: splotchy

Spelling Words

Words with Silent Consonants

Generalization: Silent consonants may occur at the beginning, in the middle, or at the end of words.

Silent T

listen

rustle

soften

castle

Silent G

sign

gnat

design

align

Silent W

wrinkle

sword

answer

wrist

Challenge Word: assignment